



## Overlight Quad Optical Receiver FM/DAB/UHF/SAT

Enhanced electronics and optical engineering to light up your TV

This complete optical Wideband satellite and terrestrial receiver captures the TV optical signal on a single fiber (1200...1600nm) and restores the original terrestrial and satellite TV signals, providing 4 RF outputs with Quad mode: the four polarities and bands are provided on each connector.

Thanks to its optimized electronics and low losses, it allows to reduce the number of amplifiers required and simplifies deployment in the design of collective installations, preserving the signal quality throughout the process. Furthermore, it is fully indicated for use in GPON installations.

This device is part of the Overlight system, that distributes satellite and terrestrial signals to multiple users through a single optical fiber.

This product is certified with the European IRS Certification Scheme mark, representing that it has passed the relevant test as set out in the latest EICS test specification, available from the DTG or CAI.

<b>Ref.</b>	237650
<b>EAN13</b>	8424450319291

## Packaging info

<b>Box</b>	1 Units
------------	---------

## Physical data

<b>Net weight</b>	840.00 g
<b>Gross weight</b>	960.00 g
<b>Width</b>	149.00 mm
<b>Height</b>	130.00 mm
<b>Depth</b>	43.00 mm
<b>Main product weight</b>	670.00 g

## Highlights

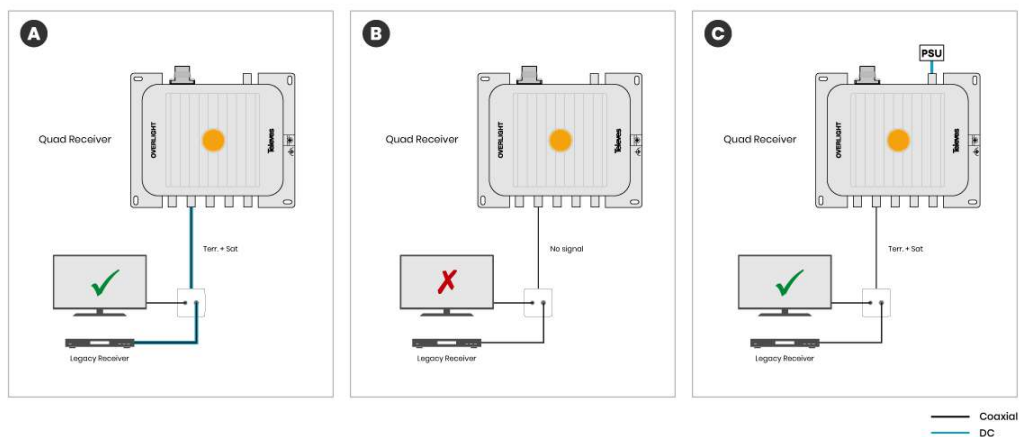
- Very compact in dimensions and weight
- Compatible with GPON deployments
- Low losses
- Optimized electronic behavior
- 100% European design, quality, and manufacturing
- SC/APC optical connector
- F-type RF connectors
- High-screening Zamak chassis
- Can be wall-mounted using screws
- Multiple powering options: remotely through the receiver (STB) or via power supply

## Application example

**A)** If the receiver is powered through the STB, both terrestrial and satellite signals are delivered.

**B)** If the STB is turned off or does not provide enough power to the receiver, no signal is delivered.

**C)** If the receiver is powered through an external power supply unit (ref. 830209/732210), both terrestrial and satellite signals are always delivered.



Technical specifications : Ref. 237650

TERR number of outputs		4	
Legacy number of outputs		4	
Impedance	Ω	75	
Output type		TERR	Legacy
Output level	dBμV	69 ... 73	64 ... 71
Output frequency range	MHz	87 ... 694	950 ... 2150
Wavelength	nm	1200 ... 1600	
Optical device		InGaAs pin photodiode	
Optical input level	dBm	-13 ... -6	
RF connectors		"F" female	
Optical connectors		SC/APC	
Powering	Vdc	12 ... 18	
Max current consumption (@12V)	mA	790	
Max current consumption (@18V)	mA	560	
Operating temperature	°C	-5 ... 45	

These measurements are conditioned to the use of an Overlight transmitter